

# LogMeIn Hamachi

## Getting Started Guide



---

# Contents

<b>What Is LogMeIn Hamachi?</b>	<b>3</b>
Who Should Use LogMeIn Hamachi?	3
<b>The LogMeIn Hamachi Client</b>	<b>4</b>
About the Relationship Between the Client and Your LogMeIn Account	5
About the Hamachi Virtual IP Address	5
<b>LogMeIn Hamachi Network Types</b>	<b>6</b>
About Mesh Networks	6
About Hub-and-Spoke Networks	6
About Gateway Networks	7
<b>LogMeIn Hamachi Subscription Types</b>	<b>9</b>
How to Change or Purchase Hamachi Subscriptions	10
How to Purchase Subscriptions from the LogMeIn Website	10
How to Purchase Subscriptions from the Hamachi Client	10
<b>Managing LogMeIn Hamachi Clients and Networks</b>	<b>12</b>
<b>LogMeIn Hamachi Security</b>	<b>13</b>
LogMeIn Hamachi and Firewalls	13
<b>Installing LogMeIn Hamachi</b>	<b>14</b>
Hamachi System Requirements	14
How to Sign up for a LogMeIn ID	14
How to Install the Client to a Local Computer	15
On Windows or Mac	15
On CentOS (Linux)	15
On Ubuntu (Linux)	16
How to Deploy the Client to a Remote Computer	16
How to Install a Hamachi Client in Client-Only mode	17
How to Update the Hamachi Client	17
On Windows or Mac	17
On Linux	18
<b>Managing LogMeIn Hamachi Networks</b>	<b>19</b>
How to Join an Existing Network	19
On Windows and Mac	19
On Linux	19
How to Add a Hamachi Network	19
How to Add a Hamachi Network from the Client	20
On Windows or Mac	20
On Linux	20
How to Approve or Reject Join Requests	21
How to Delete a Network	21
How to Leave a Network	21
<b>LogMeIn Hamachi Glossary</b>	<b>23</b>
<b>Legal Notice</b>	<b>25</b>

---

## What Is LogMeln Hamachi?

LogMeln Hamachi is a virtual networking service that can be set up in minutes and enables secure remote access to your business network anywhere there is an Internet connection.

Unlike traditional hardware and software based VPN systems, Hamachi is an on-demand virtual networking service that allows you to focus your time and energy on providing the remote connections your users and systems need, and not the technology or infrastructure you are using to support them.

## Who Should Use LogMeln Hamachi?

Here are a few examples of how you can take advantage of Hamachi.

### IT Support: Building a Mobile Office LAN

Many mobile workers use their laptops in the office while connected to their company's shared resources (file servers, network printers, mail servers, etc.). But if a user moves away from the local network, he will no longer be able to access these resources. Software that is configured to work *inside* the office becomes useless *outside* the office.

Using Hamachi, mobile workers become members of a Hamachi network wherein all shared resources are also network members. As a result, network configurations can remain unchanged. Hamachi sets up exactly the same networking environment for the mobile user no matter where he is.



**Tip:** **Hub-and-spoke** and **gateway** are the best networking modes for this scenario.

### IT Support: Setting Up Network Access for Home Workers

Home workers can be more productive when they have secure access to shared IT resources. Using the Hamachi client, home workers gain a secure tunnel directly into their company's network. They can work from home and still access the resources they need.



**Tip:** **Hub-and-spoke** and **gateway** are the best networking modes for this scenario.

### Outsourced IT: Managing Multiple Networks

A service provider with a number of administrators on his team wants to set up and maintain multiple Hamachi networks for multiple customers. He uses **LogMeln Central** to create Hamachi networks, deploy Hamachi clients, and apply default and custom settings for each customer. He can also manage other administrators in his organization, generate client activity reports, and manage network activity.

### Small to Medium Sized Organizations: Virtual LAN

Organizations without a physical LAN can use the mesh network type to set up a virtual corporate LAN.

## The LogMeIn Hamachi Client

The term Hamachi client refers to both the Hamachi software itself and any computer or smartphone with Hamachi client software installed. With proper permission from network owners, Hamachi clients can become members of any Hamachi network.

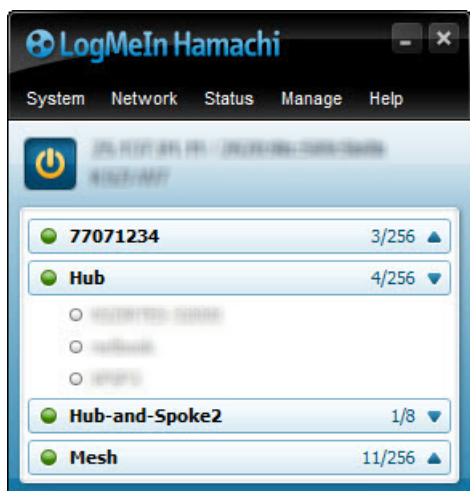


Figure 1: The LogMeIn Hamachi client for Windows



Figure 2: The LogMeIn Hamachi client for Mac

A command-line version of LogMeIn Hamachi is also available for Linux and officially supported on the following distributions:

- Ubuntu 16.04 LTS or newer
- CentOS 7.2 or newer

---

## About the Relationship Between the Client and Your LogMeIn Account

The Hamachi client can only be used with a LogMeIn ID, as an attached member of a LogMeIn account.

## About the Hamachi Virtual IP Address

Every Hamachi client has one virtual IPv4 (IP) address in the 25.x.x.x range and one IPv6 address. The virtual IP address is globally unique and is used to access the client from any other Hamachi network with at least one common mesh or hub-and-spoke network.

---

# LogMeIn Hamachi Network Types

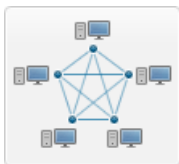
LogMeIn Hamachi provides three network types for flexibility in meeting diverse use case scenarios: Mesh, Hub-and-Spoke, and Gateway. They differ mainly in network topology.

## About Mesh Networks

In a mesh network, every member is connected to every other member.

Organizations without a physical LAN can use the mesh network type to set up a virtual corporate LAN.

Mesh is also the typical choice for gamers, because network games constantly have to broadcast their current status to all other participants in the game.



**Figure 3: Mesh network**



**Note:** Mesh is the only network type that can be created directly from the Hamachi client interface.

## About Hub-and-Spoke Networks

In a hub-and-spoke network, one or more computers act as hubs, while other clients connect as spokes. Spokes connect to hubs, but never to each other.

Hub-and-spoke is typically used when a workstation (spoke) needs to connect only to servers (hubs). For example, in a library, the catalog is a hub while workstations accessing the catalog are spokes. Hub-and-spoke is ideal if you want strict control over connections between network members.



**Figure 4: Hub-and-spoke network**



**Important:** If you set every member of a hub-and-spoke network to be a hub, you essentially turn the network into a mesh network. Similarly, if you set only spokes, your members will be unable to make a connection.

---

## About Gateway Networks

Use the gateway network type to provide transparent access to your entire network from a centralized Hamachi gateway. Members of a gateway network, such as mobile workers, will see one computer acting as a gateway towards an entire LAN, thus making all network resources accessible.



**Figure 5: Gateway network**



**Tip:** Theoretically, a hub-and-spoke network would also be a good choice for enabling mobile LAN access; however, all shared resources would also need to be running the Hamachi client and be set up as hubs. This is fine insofar as these shared resources are servers with a Hamachi compatible operating system; however, the gateway network remains the best option since Hamachi currently cannot be installed on network devices such as printers, routers, access points, etc.



**Important:** Mac hosts cannot act as gateway nodes.

### Characteristics

The gateway network type is a hybrid of the meshed and hub-and-spoke network types:

- As in a hub-and-spoke network, one computer acts as a hub (the gateway), while members act as spokes
- There can only be one gateway, which is typically a permanently online server connected to the LAN
- The number of members is virtually unlimited since even network devices that are not running the Hamachi client can be considered members
- Each member (Hamachi client) will see the gateway and the other members of the gateway's LAN
- Hamachi clients will not see each other in a gateway network

### Restrictions

For technical and security reasons there are strict rules for both the gateway and members:

- The gateway cannot be a member of any other network
- Members can join more than one gateway network, but can only be online in one network at a time. Gateway members can also be members of multiple non-gateway networks
- The gateway cannot be a workstation that is the member of a domain

### Role of the Hamachi Client in a Gateway Network

- Gateway network members and the gateway device itself must be running the Hamachi client
- Network devices that are physically connected to the LAN do not need to run the Hamachi client to be made accessible to gateway network members

---

## **Addressing**

Gateway networks integrate smoothly into the LAN in terms of addressing. 25.x.x.x addresses are not available for a gateway network. Instead, the local address space is used.



---

## LogMeIn Hamachi Subscription Types

Every Hamachi user must have either a paid or free subscription to join or create Hamachi networks.

*Free*, *Standard*, and *Premium* LogMeIn Hamachi subscriptions are available at the network level. You can have an unlimited number of Free, Standard, and Premium networks in your account, in any combination. Standard and Premium subscriptions are purchased for and applied to individual networks.

Regardless of the type and number of subscriptions you purchase, you can attach a maximum of 256 **clients** to your LogMeIn account; the number of clients is independent of the number of members per network.

Subscription type	Valid for this many networks	Members per network
Free	Unlimited	5
Standard	1 (purchased individually, per network)	32
Premium	1 (purchased individually, per network)	256

The *Multi-Network* subscription option is applied across an entire LogMeIn **account**, allowing you an unlimited number of networks with up to 256 members per network. With Multi-Network you are still subject to the limit of 256 **clients** per account. The number of clients allowed at the LogMeIn account level is independent of the number of members per network. This means that you can have potentially far more **members** in your networks than **clients** attached to your account.



**Tip:** When attempting to add a new client, you may be informed that you have reached your client limit. If this occurs, you must create "free space" in your account by removing an unused client. Otherwise, the client can only join your network if it is attached to another account and joins your network as a guest.

Subscription type	Valid for this many networks	Members per network
Multi-Network	Unlimited	256



**Tip:** The current and maximum number of network members are displayed on the Hamachi client next to the name of the network. For example, **11/256** means that there are 11 members in a network that can have up to 256 members.

### What if I do not want to renew my subscription?

Standard, Premium, and Multi-network subscriptions are paid subscriptions that allow you to have more than five members in your network. If your network has more than five members, you should take the following into consideration before you cancel your subscription:

- Your network will not accept any new members.
- Only five members will be active. Other members will be disabled (offline) in your network until you resolve this issue by purchasing a subscription or evicting network members.

- Your network will still be fully functional but only for five randomly selected members.
- You can renew your expired subscription any time.

#### **What if I never had a paid subscription?**

For free networks, only five members remain active and you are unable to add new members. For example, a free network that was created with 14 members before introducing Standard, Premium, and Multi-network subscriptions will be functional for five random members and will not accept new members.



**Important:** If you have more than five members in a network and you choose to have a free subscription, you will not be able to add new members until you remove some of them from the network.

## **How to Change or Purchase Hamachi Subscriptions**

Depending on the size of your network you can purchase several types of subscriptions. You can buy a Hamachi subscription either from the LogMeIn website or from the Hamachi client. See [LogMeIn Hamachi Subscription Types](#) on page 9.

### **How to Purchase Subscriptions from the LogMeIn Website**

1. On the **My Networks** page, click **Edit** next to the network you want to work with. The **Edit Network** page is displayed.
2. Select the **Subscription** tab.  
Your current subscription is selected.
3. Select a subscription type that you want to use or purchase.
4. Switch to the selected subscription:
  - Click **Change subscription** if you have already purchased the selected subscription
  - Click **Buy subscription** to purchase a new subscription and follow all instructions

Your changes are applied.

### **How to Purchase Subscriptions from the Hamachi Client**

1. Do one of the following to open the LogMeIn Hamachi website:
  - Click **Manage > Manage Networks**.
  - If you see a blue warning icon next to the name of your network then
    1. Click the blue warning icon next to the name of the network that you want to upgrade.
    2. Click **Upgrade options**.

The Hamachi website opens in your browser.

2. Log in to your LogMeIn account:
  - Click **Create Account** if you do not have a LogMeIn account yet and follow all instructions.

- 
- Click the **Login** link if you have a LogMeIn account.

The subscription purchase page opens.

3. Select the type and number of subscriptions you want to buy and click **Buy Now**.
4. Follow all instructions to complete your purchase.

---

# Managing LogMeIn Hamachi Clients and Networks

## Hamachi Web Management Features

Any Hamachi user with a LogMeIn account can manage attached clients and networks using the LogMeIn web site (My Networks page).

- Create mesh, hub-and-spoke, and gateway networks
- Manage the default settings to be applied to a new client
- Remotely manage client settings
- Manage the default settings to be applied to a new network
- Edit or delete existing networks
- Install the Hamachi client to the local computer
- Deploy the Hamachi client to a remote computer
- Manage requests to join Hamachi networks

## Hamachi Client Management Features

Hamachi clients provide access to the following features:

- Create mesh networks
- Manage the default settings to be applied to a new network
- Edit or delete existing networks created on the client
- Install the Hamachi client to the local computer
- Deploy the Hamachi client to a remote computer (Not available on Linux)
- Manage requests to join Hamachi networks

## Free versus Paid Subscriptions

Hamachi is free for users if they have no more than five computers per network. The paid version offers fast relays and is subject to an annual subscription fee.

For information about subscription types, see [LogMeIn Hamachi Subscription Types](#) on page 9.

---

## LogMeIn Hamachi Security

All LogMeIn Hamachi communications are encrypted and authenticated with industry-standard algorithms and protocols. Nobody will be able to see the data transmitted between two Hamachi peers. For detailed information, see the [LogMeIn Hamachi Security Whitepaper](#).

## LogMeIn Hamachi and Firewalls

If running a firewall application, you may need to ensure that Hamachi is able to access the Internet.

Please refer to the [LogMeIn Hamachi Knowledge Base](#) for up-to-date information for working with various popular security suites.

---

# Installing LogMeIn Hamachi

## Hamachi System Requirements



**Important:** A LogMeIn ID is required to attach Hamachi clients to networks. For details, see [How to Sign up for a LogMeIn ID](#) on page 14.

LogMeIn Hamachi has been tested with the following operating systems:

- Windows XP (SP3), Server 2003 Standard Edition, Small Business Server 2003
- Windows Vista (All versions), Server 2008 Standard Edition, Small Business Server 2008
- Windows 7 (All versions)
- Windows 8, 8.1 (Desktop UI only)
- Windows 10
- Windows Server 2012
- Mac OS 10.6 (Snow Leopard) or newer on Intel-based Macs
- Linux distributions:
  - Ubuntu 16.04 LTS or newer
  - CentOS 7.2 or newer
- Internet connection



**Note:** Windows RT is not supported.

Please be aware, however, the Gateway Node functionality is not available on the following platforms, due to limitations within the operating systems themselves:

- Mac OS
- Windows Small Business Server editions
- Deployed on Azure

## How to Sign up for a LogMeIn ID

Sign up for a LogMeIn ID to use LogMeIn software and services. No obligation. No credit card required.

Your LogMeIn ID provides a single login experience for the following LogMeIn products and services on every platform.

- LogMeIn (client and host)
- Central
- join.me
- Cubby
- AppGuru

1. Go to [www.LogMeIn.com](http://www.LogMeIn.com).

2. Click **Log In** in the upper-right corner.  
The **Log in or sign up** page is displayed.
3. Click **Sign up**.
4. Fill in the registration form and follow all on-screen instructions.  
Upon completing the account form you will be sent a confirmation email.
5. Carefully follow all instructions in the email you receive from LogMeIn regarding account activation.  
Can't find an email from LogMeIn? Check your junk or spam folder.

## How to Install the Client to a Local Computer

Follow this procedure to download and install the Hamachi client to a local computer. The client will be attached to your LogMeIn account.

### On Windows or Mac



**Important:** You must be logged in to the LogMeIn account to which you want to attach the new Hamachi client.

1. On the LogMeIn web site, switch to Network mode and click **Add Client**.  
The **Add Client** page is displayed.
2. Select **Install LogMeIn Hamachi on this computer** and click **Continue**.
3. Click **Install LogMeIn Hamachi**.  
The Hamachi installer is launched.
4. Follow the on-screen instructions.

The client is installed on the local computer as an attached member of the active LogMeIn account. You will be able to manage this client using the LogMeIn website.

### On CentOS (Linux)

Install Hamachi via the command line.

1. Download Hamachi using the terminal.

```
wget http://www.vpn.net/installers/logmein-hamachi-2.1.0.165-1.x86_4.rpm
```

The installer package is downloaded to your current directory.

2. Install the package.

```
sudo yum install logmein-hamachi-2.1.0.165-1.x86_4.rpm
```

The client is installed on the local computer.



**Important:** Before you can connect to a network, you must attach the client to your LogMeIn account.

1. Execute `sudo hamachi login` to log in.
2. Execute `sudo hamachi attach [email@example.com]` using your LogMeIn ID (email address) to attach your client.

---

## On Ubuntu (Linux)

1. **Option 1:** Install Hamachi via the command line.

- a) Download Hamachi using the terminal.

```
wget http://www.vpn.net/installers/logmein-hamachi_2.1.0.165-1_amd64.deb
```

The installer package is downloaded to your current directory.

- b) Install the package.

```
sudo dpkg -i logmein-hamachi_2.1.0.165-1_amd64.deb
```

2. Install the package using the Ubuntu Software app.

- a) Navigate to <http://www.vpn.net/>.
- b) Click the appropriate package to download it.
- c) Open the .deb package with **Software Install**.  
The **Ubuntu Software** window is displayed.
- d) Click **Install**.
- e) When prompted, enter the admin password for elevation.

The client is installed on the local computer.



**Important:** Before you can connect to a network, you must attach the client to your LogMeIn account.

1. Execute `sudo hamachi login` to log in.
2. Execute `sudo hamachi attach [email@example.com]` using your LogMeIn ID (email address) to attach your client.

## How to Deploy the Client to a Remote Computer

Follow this procedure to send an installation link that the recipient can use to download and install the Hamachi client. The client will be attached to your LogMeIn account.



**Important:** You must be logged in to the LogMeIn account to which you want to attach the new Hamachi client.



**Note:** This functionality is not available on Linux.

All defaults set under **Configuration > Client Defaults** will be applied to the new client(s).

1. On the LogMeIn web site, switch to Network mode and click the **Deployment** link.
2. Click **Add New Link**.  
The **Deploy LogMeIn Hamachi to remote computer(s) (Step 1 of 2)** page is displayed.
3. Type a **Description** that you can use to recognize your installation link.
4. In the **Maximum number of remote installations** box type the maximum number of computers that will be able to use the link to install the Hamachi client.  
For example, you may want to send the link to all users in an entire department.
5. In the **Expiration** field you may choose when you want the validity of the link to expire.



- 
6. Select the **Network(s)** that you want the client to be able to access.
  7. Click **Continue**.  
The **Deploy LogMeIn Hamachi to remote computer(s) (Step 2 of 2)** page is displayed.
  8. Send the link to the recipient(s):
    - Click **Copy** to place the link onto your clipboard for you to paste into an email or instant messaging service message to send to the user(s)
    - Click **Send** to open your default email client with the link in the body of the message for you to send to the user(s)
    - Click **Test** to view the message that will be displayed when the recipient clicks the linkThe link is sent to the recipient.

The recipient must click on the installation link to actually install the client on the chosen computer. Once installation is complete, the client can be used to create and connect to Hamachi networks.

## How to Install a Hamachi Client in Client-Only mode

Follow this procedure to download and install the Hamachi client without associating it with a LogMeIn account.



**Important:** Do not log in to your LogMeIn account.



**Note:** Hamachi for Linux is installed in client-only mode by default. To detach a Linux client, see [How to Detach \(Delete\) a Client from Your Account](#). You can detach a client from your LogMeIn account and remove it from all networks in your account. The Hamachi client software will remain installed on the local computer. .

1. Go to the LogMeIn Hamachi product page.
2. Click the **Try it free** link.
3. Do not create a LogMeIn account.
4. Click the **Download Now** link at the bottom of the page.  
The Hamachi installer is launched.
5. Follow all on-screen instructions.

## How to Update the Hamachi Client

This procedure must be executed on the client.

### On Windows or Mac

The Hamachi client software can be updated from the client itself.

By default, the Hamachi client downloads updates automatically when you restart your client or when your client is online for a week. You should download updates manually if you turn off automatic updates.

- To check whether you receive automatic updates, go to **System > Preferences > Settings** and verify that the **Enable automatic update** option is selected.

- 
- To manually download client updates, click **Help > Check for Updates**.

## On Linux

Hamachi for Linux can be updated manually.

1. Open the terminal.
2. Execute the following command:

```
sudo hamachi check-update
```

The Hamachi version information is displayed.

3. If your client is not up-to-date, follow the steps in this article: [How to Install the Client to a Local Computer](#) on page 15.

---

# Managing LogMeIn Hamachi Networks

## How to Join an Existing Network

This procedure must be executed on the client.

Depending on the settings of the individual Hamachi networks, the owner of the network may have to approve your request before you can join.

### On Windows and Mac

1. Select **Network > Join an existing network**.
2. Type the network ID and password of the network.
3. Click **Join**.

#### Where do I find my network ID?

If you created a network on the client, your network ID and network name are the same. You find your network ID by hovering the mouse over the network's name.

If you created a network on the web, you find your nine-digit network ID by clicking **Edit** next to the network's name.

### On Linux

1. Open the terminal.
2. Execute the following command:

```
sudo hamachi join <network ID>
```

#### Where do I find my network ID?

See the following article for details: [Hamachi for Linux Fundamentals](#)[Get started with Hamachi for Linux](#).

## How to Add a Hamachi Network

1. On the LogMeIn web site, go to the **Networks > My Networks** page.  
Your Hamachi networks and clients are listed.
2. On the **My Networks** page, click **Add Network**.  
The **Add Network (Step 1)** page is displayed.
3. Name the network in the **Network name** field.  
Use the network name to help identify the network.
4. Select a **Network type**.  
See [LogMeIn Hamachi Network Types](#) on page 6.



**Important:** Once a network is created, its network type cannot be changed.

5. Enter a **Network description** (optional).
6. Click **Continue**.  
The **Add Network (Step 2)** page is displayed.
7. Select the default response to join requests.

Option	Description
<b>Accept automatically</b>	All requests to join the network will be accepted automatically. We recommend that you require a network password when using this option.
<b>Must be approved</b>	All requests to join the network must be approved on the web.
<b>Members can be added on the web only</b>	Clients will not be able to join the network from the client. Clients can be added to the network on the web only.

8. Under **Network password**, select **A password is required to join this network** to protect your network.



**Tip:** If you do not set a password, we recommend setting the Join Request behavior to **Must be approved** or **Members can be added on the web only**.

9. Click **Continue**.  
The **Add Network (Step 3)** page is displayed.
10. Follow the on-screen instructions.
11. Click **Finish**.  
Your network is created with a system-generated Network ID.



**Note:** When you assign a gateway, you will lose your network connection for a few seconds while the Hamachi virtual network adapter bridges to the physical network adapter.

## How to Add a Hamachi Network from the Client

### On Windows or Mac

This procedure must be executed on the client.

1. Click **Network > Create a new network**.
2. Type the network ID and password of the network.
3. Click **Create**.

### On Linux

1. Open the terminal.

2. Execute the following command:

```
sudo hamachi create <network ID> [password]
```

## How to Approve or Reject Join Requests

If you receive a request from another client to join your network, you can approve or reject that request. A request is automatically rejected if you do not approve it in two weeks.

1. On the LogMeIn web site, go to the **Networks > My Networks** page. Your Hamachi networks and clients are listed.
2. You will see the following message when you have requests from clients waiting to join your account or networks: **You have x pending join requests**. Click the **pending join request** link. The Join Requests page is displayed.
3. Choose **Accept** or **Reject**, as appropriate.
4. Click **Save**.



**Note:** You may not be able to accept new members if your Hamachi subscription expires or if you reach the member limit of your network. See also [LogMeIn Hamachi Network Types](#) on page 6.



**Tip:** Are you on Linux? You can approve or reject requests from the command line with the following commands:

```
sudo hamachi approve <network ID> <client ID>
```

```
sudo hamachi reject <network ID> <client ID>
```

## How to Delete a Network

1. On the LogMeIn web site, go to the **Networks > My Networks** page. Your Hamachi networks and clients are listed.
2. On the **My Networks** page, click **Edit** next to the network you want to work with. The **Edit Network** page is displayed.
3. Select the **Delete** tab.
4. Click the **Delete** button. The network is permanently deleted. All client installations and client-to-account relationships are left intact.

## How to Leave a Network

This procedure must be executed on the client.

1. On the client, right-click on the network that you want to leave.
2. Click **Leave network**.



**Important:** You cannot transfer the ownership of a network; therefore, you cannot leave a network that you created. You can only delete such networks.



**Note:** A network owner can prohibit members from leaving a network.

---

# LogMeIn Hamachi Glossary

## Gateway network

Use the gateway network type to provide transparent access to your entire network from a centralized Hamachi gateway. Members of a gateway network, such as mobile workers, will see one computer acting as a gateway towards an entire LAN, thus making all network resources accessible.



**Note:** Gateway networks are not supported on Azure.

## Hamachi client

The term Hamachi client refers to both the Hamachi software itself and any computer or smartphone with Hamachi client software installed. With proper permission from network owners, Hamachi clients can become members of any Hamachi network.

## Hamachi network

For Hamachi, a network is not a physical network, but rather a group of users who want to use common resources or applications (two or more Hamachi clients interconnected by tunnels make up a Hamachi network). Hamachi offers three network types: meshed, hub-and-spoke, and gateway.

## Hub-and-spoke network

In a hub-and-spoke network, one or more computers act as hubs, while other clients connect as spokes. Spokes connect to hubs, but never to each other.

## LogMeIn Central

LogMeIn Central is LogMeIn's Essential Remote Services solution for IT professionals and small and medium businesses. Certain premium Hamachi features are only available to LogMeIn Central subscribers.

## Mesh network

In a mesh network, every member is connected to every other member.

---

## **NAT**

Network Address Translation

## **Peer**

A computer that is a member of a computer network.

## **Peer Label**

The Peer Label is used to define your online presence to other Hamachi users. This is what other users see as your identification when you are in a Hamachi network.

## **Unattached network**

The term Unattached network refers to any Hamachi network that was created on an unattached client. Unattached networks can only be mesh networks and they cannot be managed on the web using the My Networks page or LogMeIn Central.

## **VPN**

Virtual Private Network



---

## Legal Notice

PUBLISHED BY

LogMeIn, Inc.  
320 Summer Street Suite 100  
Boston, MA 02210

All rights reserved. No part of the contents of this document may be reproduced or transmitted in any form or by any means without the written permission of the publisher.

AppGuru™, LogMeIn Backup®, BoldChat®, LogMeIn® Central™, Cubby™, LogMeIn Hamachi®, join.me®, LogMeIn Pro®, LogMeIn Rescue® or LogMeIn® Rescue+Mobile™, and Xively™, along with their related software, including the Network Console™, and the other denoted terms in this publication are the trademarks and service marks of LogMeIn, Inc., and may be registered in the U.S. Patent and Trademark Office and in other countries. All other trademarks and registered trademarks are property of their respective owners.

This publication may contain the trademarks and service marks of third parties and such trademarks and service marks are the property of their respective owners. These marks may be registered and/or used in the U.S. and other countries around the world. These third party marks include, but are not limited to, Blackberry, Windows, Apple, iPhone, iPod Touch, iTunes App Store and related trademarks, names and logos. These third party marks are the property of Research In Motion Limited, Microsoft Corporation, and Apple, Inc., respectively, and are registered and/or used in the U.S. and other countries around the world.

THE SPECIFICATIONS AND INFORMATION REGARDING THE PRODUCTS AND SERVICES IN THIS MANUAL ARE SUBJECT TO CHANGE WITHOUT NOTICE. ALL STATEMENTS, INFORMATION, AND RECOMMENDATIONS IN THIS MANUAL ARE BELIEVED TO BE ACCURATE BUT ARE PRESENTED WITHOUT WARRANTY OF ANY KIND, EXPRESS OR IMPLIED. USERS MUST TAKE FULL RESPONSIBILITY FOR THEIR APPLICATION OF ANY PRODUCTS AND SERVICES. THE LICENSE AND LIMITED WARRANTY FOR THE ACCOMPANYING PRODUCT AND SERVICES ARE SET FORTH IN THE LOGMEIN [TERMS AND CONDITIONS](#) AND ARE INCORPORATED HEREIN BY THIS REFERENCE.

# Index

## A

- account
  - LogMeIn 14
- attached client 5

## C

- client
  - deployment 16

## F

- firewall 13

## H

- Hamachi client 4
- Hamachi features 12
- Hamachi installation for Windows 17
- Hamachi license 9, 12
- Hamachi network types 6
- Hamachi subscription 9, 12
- Hamachi update 17
- Hamachi virtual IP address 5

## J

- join requests 21

## L

- license 9, 12
- Linux 14

## N

- network
  - add 19
  - add from client 20
  - delete 21
  - leave 21
- network types
  - gateway 7
  - hub-and-spoke 6
  - mesh 6

## S

- security 13
- subscription 9, 12
- system requirements 14

## U

- unattached client 5